

# 1750 R



[www.ommelift.dk](http://www.ommelift.dk)

## CRAWLER MOUNTED BOOM PLATFORM

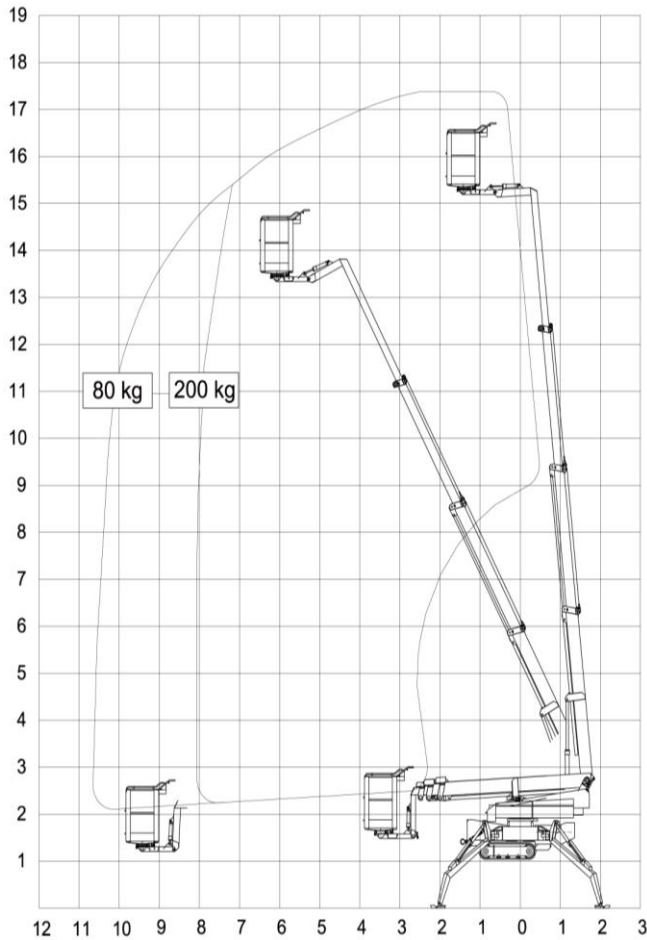
OMME LIFT A/S – Lægårdsvej 4 – DK 7260 Sdr. Omme  
Phone: + 45 753 413 00 – Fax: + 45 753 415 92  
E-mail: [omme@ommelift.dk](mailto:omme@ommelift.dk) – Web: [www.ommelift.dk](http://www.ommelift.dk)

# OMMELIFT



Quality since 1906

# 1750 R (J) Crawler Mounted



| Technical Data:                  | 1750 RB       | 1750 RBD     | 1900 RJ Fly jib |
|----------------------------------|---------------|--------------|-----------------|
| Max. working height              | 17.20 m       |              | + 1.4 m         |
| Max. outreach                    | 10.40 m       |              |                 |
| Max. basket load                 | 200 kg        |              |                 |
| Basket size                      | 1.25x0.8x1.1m |              |                 |
| Rotation                         | ± 355°        |              |                 |
| Battery                          | 24V/400Ah/5h  | 24V/200Ah/5h |                 |
| Charger                          | 24 V/30 A     |              |                 |
| Diesel engine                    |               | 14kW/18.8hp  |                 |
| Generator                        |               | 24 V/22 A    |                 |
| Travelling length                | 5.80 m        |              | + 0.17 m        |
| Travelling height                | 1.99 m        |              |                 |
| Travelling width                 | 1.10 m        |              |                 |
| Operational width                | 4.60 / 3.75 m |              |                 |
| Total weight approx.             | 2900 kg       |              | + 100 kg        |
| Gradeability: Across slope up to | 30% (16.7°)   |              |                 |
| Up and down slope up to          | 40% (21.8°)   |              |                 |
| Stabilization up to              | 40% (21.8°)   |              |                 |
| Proportional controls            | +             |              |                 |
| 230 V outlet in basket           | +             |              |                 |
| Transformer                      | O             |              |                 |
| Wireless remote control          | O             |              |                 |
| Non-marking tracks               | O             |              |                 |
| Automatic set-up and take-down   | O             |              |                 |

+ Standard O Optional

## GRADEABILITY



Outside



Inside



Easy set up



Fly jib (option)

- Type 1750RB and 1750RBD are identical apart from the power sources. Standard features include hydraulic stabilizers, turnable basket and proportional controls. The adjustable stabilizer spread provides substantial reduction in operational width. The basket mounting that forms a "fly" boom mounted to the top boom section gives increased outreach over obstacles. The specially designed steel booms made from high and broad profiles allow greater outreach whilst maintaining a high degree of stability and rigidity. Being short in travelling length the platform is extremely manoeuvrable in narrow places. The self-propulsion system is electronically operated by proportional levers comfortably placed in a light weight mobile control box.
- 1750RB is powered by a heavy duty 24 V battery pack. In order to accommodate extreme and long term usage a transformer for direct mains connection is included. This type is especially suited for indoor operation.
- 1750RBD is a battery and diesel engine bi-energy unit. This type is therefore suited for both indoor and outdoor usage. The diesel power pack provides an incredible gradeability of remarkable 40%, equivalent to 21.8°, an environment where lift deployment is also possible. Underlining the general stability is the easy self-propulsion manoeuvrability across a 30% (16.7°) slope. Combined with the strong, non-skid crawler belts this lift type is indeed go anywhere access.