

# 2100 E



[www.ommelift.dk](http://www.ommelift.dk)

## TRAILER MOUNTED BOOM PLATFORM

OMME LIFT A/S – Lægårdsvej 4 – DK 7260 Sdr. Omme  
Phone: + 45 753 413 00 – Fax: + 45 753 415 92  
E-mail: [omme@ommelift.dk](mailto:omme@ommelift.dk) – Web: [www.ommelift.dk](http://www.ommelift.dk)

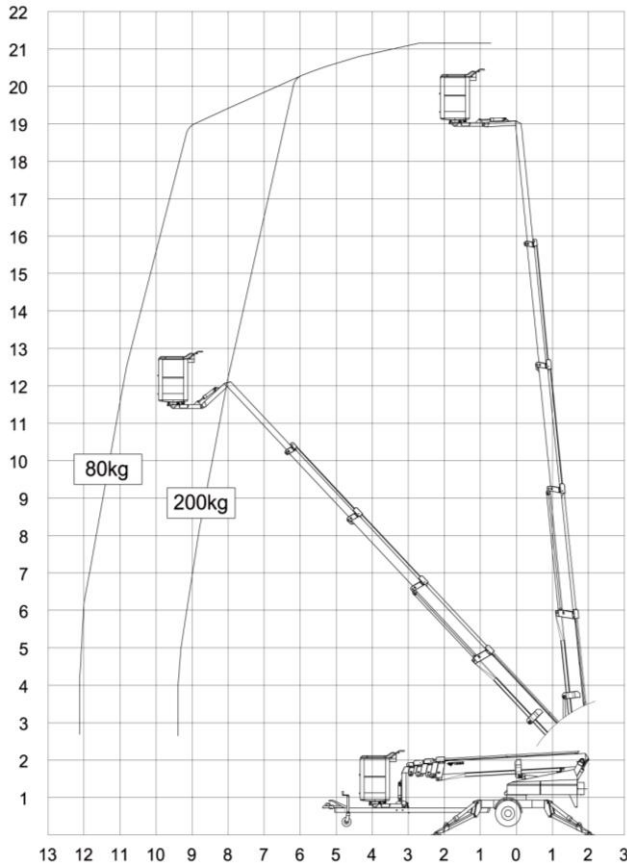
# OMMELIFT



Quality since 1906

# 2100 E

## Mounted on trailer



Technical data:	2100 E	2100 EB	2100 EBD
Max. working height	21.15 m		
Max. outreach	12.20 m		
Max. basket load	200 kg		
Basket size	1.25x0.8x1.1m		
Turnable basket	± 41°		
Rotation	± 40°		
Power supply	230V/16A	Battery	Battery/diesel
Batteries		24V/200Ah/5h	24V/200Ah/5h
Charger		24 V/30 A	24 V/30 A
Diesel engine			14kW/18.8hp
Generator			24 V/22 A
Transport length	7.35 m	7.35 m	7.62 m
Transport height	2.10 m		
Transport width	1.70 m		
Operational width	4.25 m		
Total weight	2380 kg	2500 kg	2780 kg
Controls	Proportional		
Hydraulic stabilizers	+		
Hydraulic propulsion	+		
230 V outlet in basket	+		

+ Standard

## A STABLE LIFT – ALSO DURING TRANSPORT



Angle boom



Propulsion



Easy control



Transport

- 2100E, 2100EB and 2100EBD are identical apart from their power sources. Standard features include hydraulic stabilizers with interlocks, basket rotation and proportional controls with dual controls to ground and basket. Design features include a basket mounting that forms a "fly" boom mounted to the top boom section and gives increased outreach over obstacles. The specially designed steel booms made from high and broad profiles allow greater outreach whilst maintaining a high degree of stability and rigidity. Being shorter in travel length than most machines of this type, the 2100E-series allows improved manoeuvrability and is particularly suited when mounted on to a chassis cab.
- 2100E is mains powered 230 V/16 A and is especially suitable, where continuous or extended operation is required.
- 2100EB is powered by a heavy duty 24 V battery pack with built-in charger capable of charging the batteries whilst the platform is in use. 2100EB is especially suited for jobs, without mains access.